

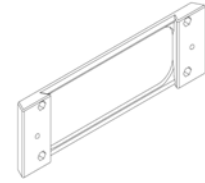
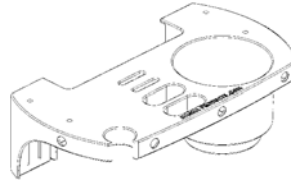
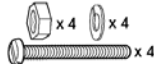


# Installation Instructions

## Removable Side Station for Tournament Series Cleaning Stations

### Contents:

- (1) Side station
- (1) Mounting bracket
- (4) 8-32 X 3/4" Truss Phillips head screws
- (4) 8-32 Nylock nuts
- (4) #8 Flat washer



Side Station

Mounting Bracket

### Tools Required for table installation:\*

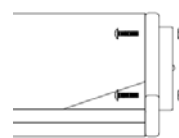
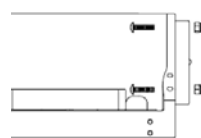
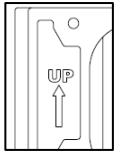


- (1) Phillips head screwdriver

\* Note: Additional tools and fasteners required for mounting to a bulkhead/gunnel.

- This side station is designed to work with Magma's 20", 34", and 48" injection molded and HDP (High Density Polyethylene) Tournament Series Cleaning Stations. It can also be mounted to a flat bulkhead or gunnel surface.
- Determine on which side of table your station is to be mounted.
- Use the provided fasteners and a Phillips head screwdriver to attach side station mounting bracket to table (no wrench is necessary for securing, lock nuts recess into mounting bracket).\*

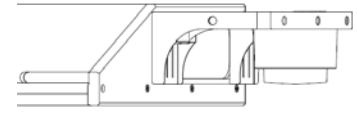
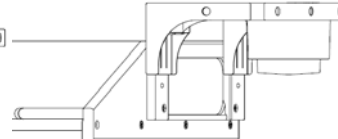
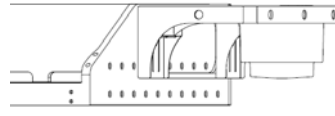
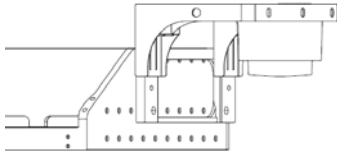
\* Note: Mounting bracket has a directional arrow on back of bracket. Back of bracket must face table and arrow must be in an up position for proper installation.



(Injection Molded)

(HDP)

- Once bracket installation is complete, slide side station onto bracket from top to bottom.

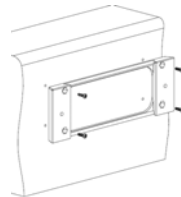
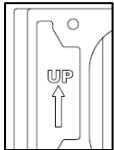


(Injection Molded)

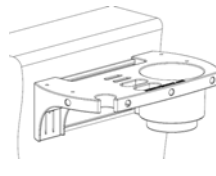
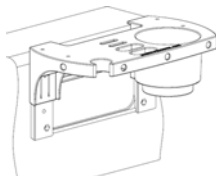
(HDP)

- Mounting to bulkhead/gunnel, once mounting location is determined use bracket to mark installation location.
- Determine correct fastener size for application and pre drill installation holes on bulkhead/gunnel.
- Using a Phillips head screw driver attach mounting bracket to bulkhead/gunnel.\*

\* Note: Mounting bracket has a directional arrow on back of bracket. Back of bracket must face bulkhead/gunnel and arrow must be in an up position for proper installation.



- Once bracket installation is complete, slide side station onto bracket from top to bottom.



### MAGMA PRODUCTS, INC.

3940 PIXIE AVE • LAKEWOOD, CA 90712 • U.S.A • TEL: (562) 627-0500  
[www.MagmaProducts.com](http://www.MagmaProducts.com) • E-mail: mail@MagmaProducts.com