

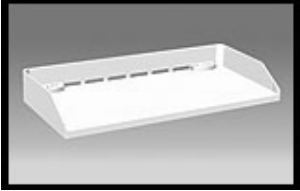
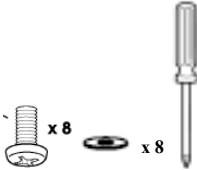
# Care, Use & Assembly Instructions

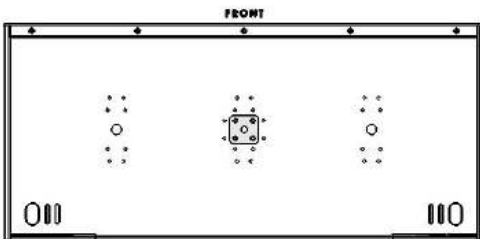
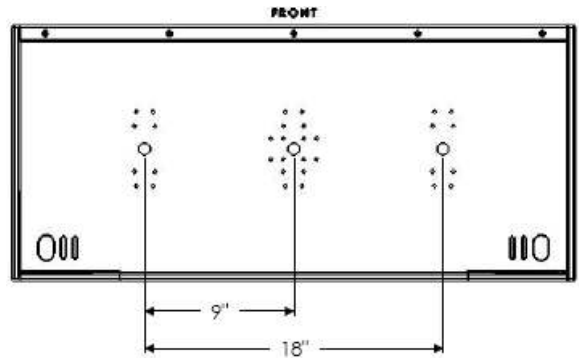
## 34" X 16" HDP (High Density Polyethylene)

### Tournament Series Fish Cleaning Station

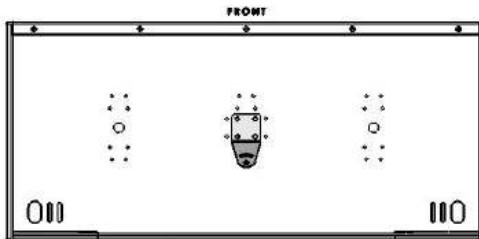
- 34" Cleaning station uses both "Single" and "Dual" Magma mounts (See chart below for specific applications). Other Springfield, Garelick, and Todd pedestal mounts may also be used (illustrations not shown).
- For level table adjustment, see instructions included with mounting hardware.
- **WARNING: Do Not install mounting fasteners into table without mount. As they will damage table surface.**
- Use only provided fasteners. Lost or missing fasteners can be replaced with 1/4-20 X 5/8" Phillips pan head screws.
- Clean with soap and water. For mold / mildew prevention or to disinfect use diluted bleach and water solution. Do not use other solvents or chemicals.
- The fish cleaning station is UV stabilized. However when not in use we recommend that you stow away from harsh sunlight.

**Note:** Prior to mount installation determine specific mount spacing (see mounting hole template). Install mount to table prior to socket installation to verify proper spacing and mount location.

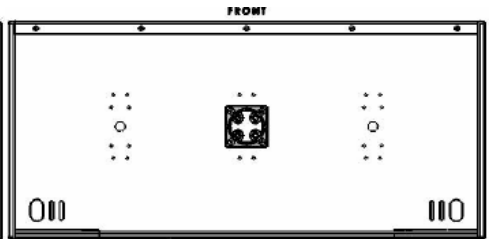
<p><b>Contents:</b></p> <ul style="list-style-type: none"> <li>(1) 34 X 16 HDP Fish Cleaning Station</li> <li>(8) 1/4-20 X 5/8" Phillips pan head screws</li> <li>(8) 1/4" Washer</li> </ul> 	<p><b>Tools Required:</b></p> <ul style="list-style-type: none"> <li>(1) Phillips head screwdriver</li> </ul> <p><b>Note:</b> Additional tools and fasteners required for some mount installation.</p> 
--	--



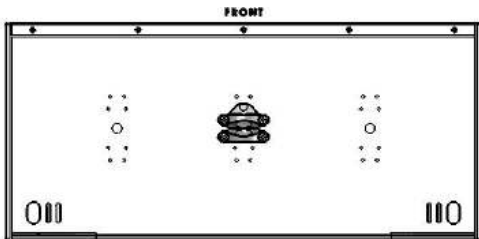
Socket Mounts: T10-321, T10-326, T10-360, T10-365, Square Rail: T10-340



Round Rail Mounts: T10-380, T10-385, T10-390



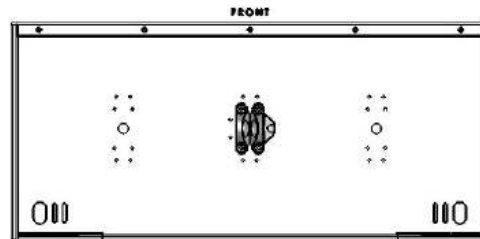
Pedestal Mount: T10-185



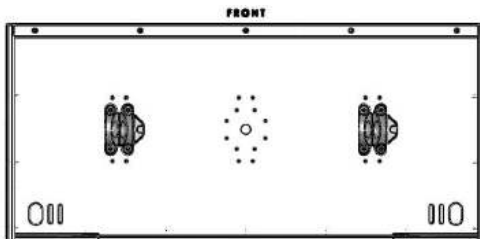
(For maximum left to right adjustment)

Levelock™ Mount: T10-355, Levelock™ Socket Mounts: T10-322, T10-327, Vertical Round Rail Mounts: T10-780, T10-785, T10-790

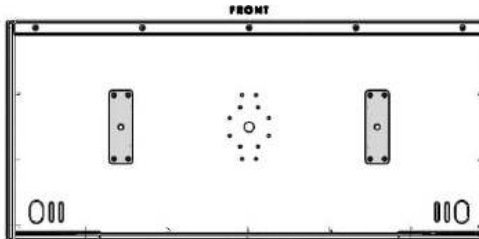
**Note:** Original, T10-350, Levelock™ mount can not be used with Tournament Series Fish Cleaning Stations.



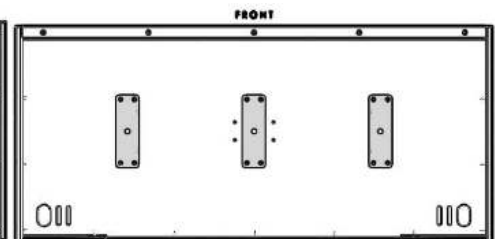
(For maximum front to back adjustment)



Levelock™ Socket Mounts: T10-522, T10-527



Socket Mounts: T10-521, T10-526  
Square Rail Mount: T10-540,  
Round Rail Mounts: T10-580, T10-585, T10-590



Round Rail Mount: T10-455